

RS3 8V Engine Side Catch Can install guide



Thank you for your purchase of the VTT RS3 Engine Side Catch can kit! First thing to do when you open your box is to make sure all parts are in their respective bags and nothing has been left out or lost during shipping. Here is a breakdown of what you should have.

- 1 VTT Catch can
 - 1 VTT Catch Can Bracket
- 2 Silicone Hoses with -10AN female hose ends
 - 2 VTT -10AN Low Profile Banjos
 - 2 Spring Clamps
 - 1 -6 Drain fitting (optional)



Once all parts are accounted for you can proceed with the Catch Can Installation. We suggest this only be done by a qualified technician. If something was missing for your upgrade, please contact us immediately so we can remedy this.

READ THE ENTIRE GUIDE BEFORE BEGINNING INSTALLATION!



ANY QUESTIONS, OR FITMENT PROBLEMS, PLEASE EMAIL SALES@VARGASTURBO.COM BEFORE TRYING TO FORCE OR MODIFY ANYTHING. THIS UPGRADE IS

PLUG AND PLAY IF THESE INSTRUCTIONS ARE FOLLOWED, ANY ISSUES NEED TO BE ADDRESSED TO AVOID PROBLEMS

INSTALL GUIDE

1. Remove Engine cover, and set aside. You must access the factory PCV hose from the turbo inlet to the Y fitting that is located under the left 2 coils packs. (Figure 2)
2. Remove and plug limiting access, the coil hold down bolts, unplug, and pull those 2 coils out of the car. This will allow access to the stock plastic PCV hose, and Y fitting. Now you have two choices for removal of the stock hose. A. Completely remove the Y fitting, and the PCV barb from the turbo inlet (requires a drill, and easy out tool). Once removed from the car use a heat gun, and remove the stock hose. Reinstall the barb on the inlet, and the Y fitting on the valve cover. You now have your barbs to attach the new VTT hoses. B. Simply leave the Y fitting, and inlet barb in place, and using a sharp blade such as a razor blade, box cutter, or exacto knife. CAREFULLY cut down the hose just enough to free it from the barbs. Pull the hose out of the way, and you have open barbs to take the VTT Hoses. (See Figure to see what the area looks like with factory hose removed, and Figure 4 for what cut factory hose looks like)
3. Now that factory PCV hose is removed we will prepare the catch can. If you ordered the drain remove the ORB plug, and installed the drain fitting into the bottom of the can.
4. Next install the two Banjo fittings to the can, leaving them slightly loose for now.
5. Remove the two Torx screws from the upper Valance/headlight area where the bracket is going to mount. (Figure 1) At this point lower your catch can into the area under where the bracket will sit. Slide the bracket arms underneath the valance, and line up the two holes in the brackets with the holes in the trim. Thread your screws back in making sure the threads also engage the bracket threads. Tighten until they are hand tight, but not fully tight. Now carefully raise your catch can to the bracket, and install the 4 countersunk bolts to hold it place. (You will need to move your AC line over by simply pulling on it, it will move easily, and stay where its left, leave about a ¼" between the bottom banjo and the AC hard line.) At this point the can is mounted loosely.
7. Install your bottom hose on the banjo, and run it back to the Y fitting on the valve cover, trim to length, install the spring clamp on the hose, and push it back leaving room to install the hose on the barb. Push it on until it stops then pinch the spring clamp, and secure the hose (Figure 6 and 7)
8. Now install the top hose, and run it back to the turbo inlet barb, cut to length based on your inlet elbow. Install the spring clamp push it down the hose, install hose fully onto barb. Squeeze spring clamp, and install on end of hose (Figure 6 and 7)
9. At this point the can, and hoses are installed. Go back, and tighten the two Torx bolts, 4 countersunk bolts, banjo bolts into the can, and your -10 hose ends. Once everything is tight, reinstall your coils, any plugs removed, start the car, and ensure everything is seated, and looks ok. Reinstall the engine cover

10. This concludes the Install of the VTT RS3 Catch Can Install, go enjoy your RS3 without worry about oil in the intake tract!

Fig 1



Fig 2



Fig 3



Fig 4

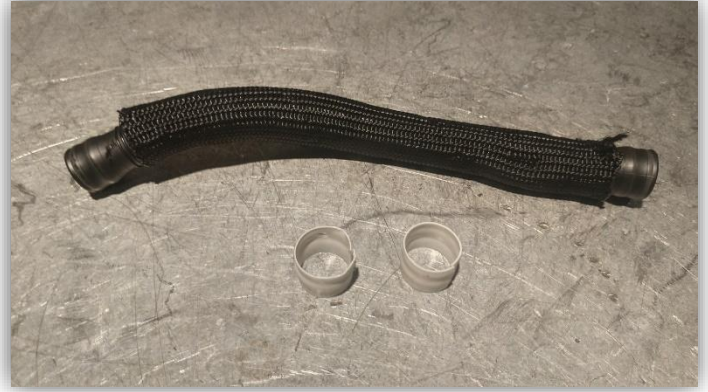


Fig 6



Fig 7

